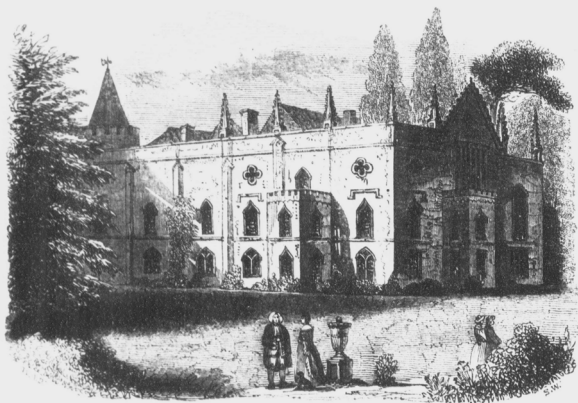


-THROUGHOUT THE YEARS-

JANUARY 1842 - *Ainsworth Magazine*

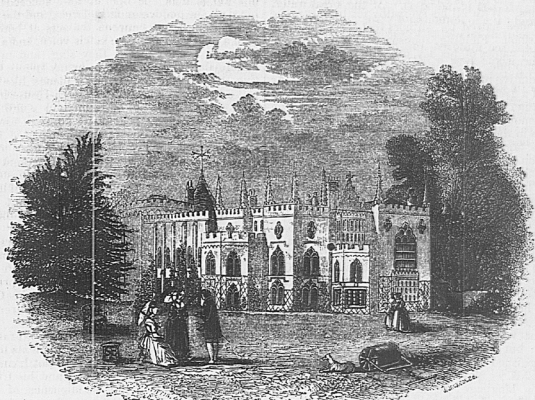
STRAWBERRY HILL RE-VISITED.
BY DUDLEY COSTELLO.
WITH ILLUSTRATIONS, BY W. ALFRED DELAMOTTE.



'STRAWBERRY HILL RE-VISITED'
ILLUSTRATED BY W. ALFRED DELAMOTTE

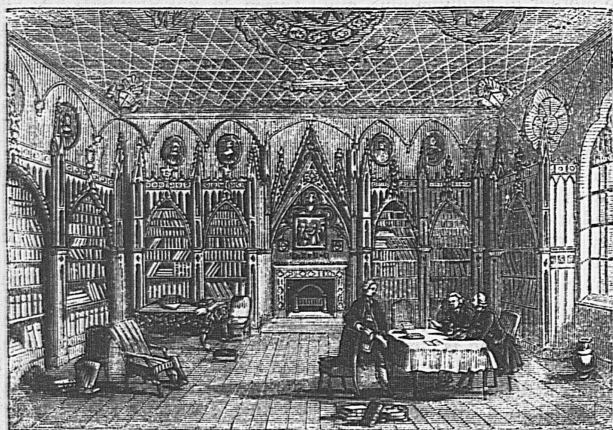
7th MAY 1842 - *The Penny Magazine*

1842.] THE PENNY MAGAZINE. 181



[View from the Garden of Strawberry Hill.]

'VIEW FROM THE GARDEN OF STRAWBERRY HILL'



[Interior of the Library, Strawberry Hill]

'INTERIOR OF THE LIBRARY, STRAWBERRY HILL'

*Frances Elizabeth Anne (née Braham),
Countess Waldegrave, 24TH FEBRUARY 1861*

photographed by Camille Silvy © National Portrait Gallery London



Assembled by DR.
ROSALIND WHITE

STRAWBERRY HILL HOUSE

ASSORTED CUTTINGS
& PHOTOGRAPHS

-THROUGHOUT THE YEARS-

1863 - Photographed by Philip-Henry Delamotte



Frances Elizabeth Anne (née Braham), Countess
Waldegrave, c. 1870 albumen carte-de-visite

by London Stereoscopic & Photographic Company © National Portrait Gallery London



'LADY WALDEGRAVE'S BALL AT STRAWBERRY HILL' THE GRAPHIC, 29TH JULY 1871



Assembled by DR.
ROSALIND WHITE

STRAWBERRY HILL HOUSE

ASSORTED CUTTINGS
& PHOTOGRAPHS

-THROUGHOUT THE YEARS-

'Countess Waldegrave' c. 1871, published in *Later letters of Edward Lear: to Chichester Fortescue (Lord Carlingford), Lady Waldegrave and others* (London T. Fisher Unwin 1911)

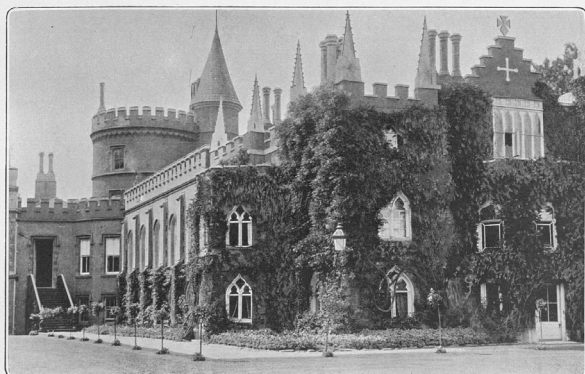


FRANCES, COUNTESS WALDEGRAVE.
(From her sitting-room window at Strawberry Hill.)

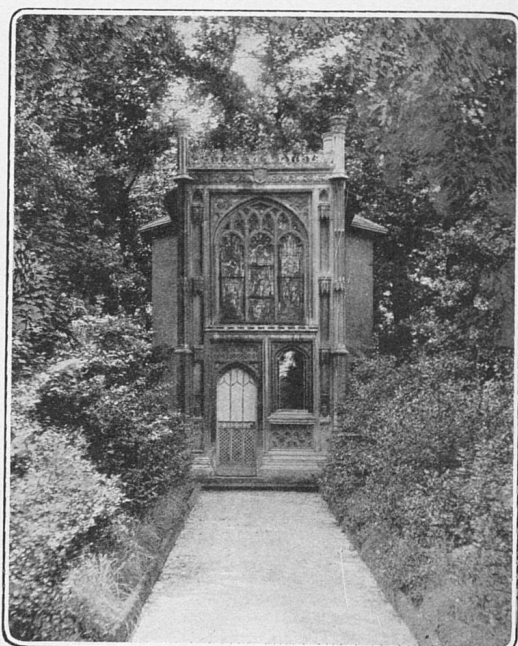


FRANCES, COUNTESS WALDEGRAVE.
(Taken at Strawberry Hill about 1871.)

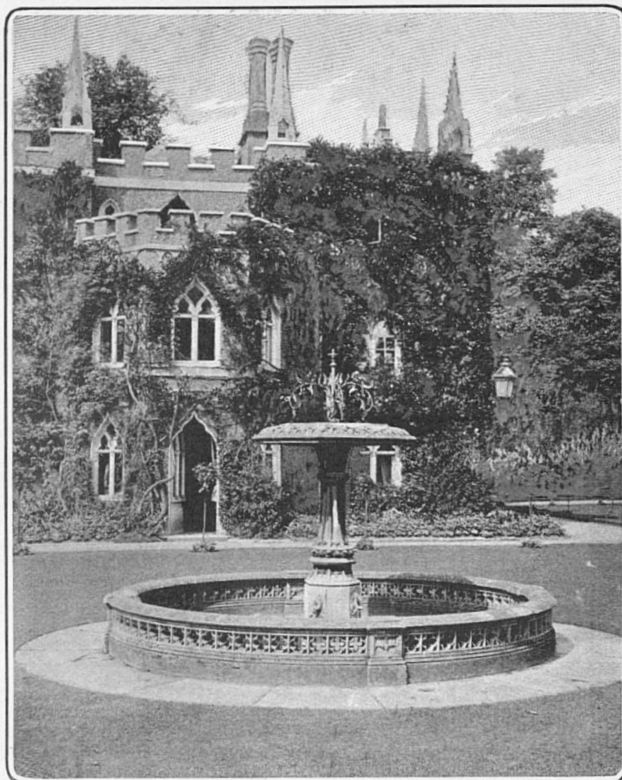
2ND SEPTEMBER 1903 - *The Sketch* 'BEAUTIFUL BRITISH HOMES'



THE GARDEN FRONT OF STRAWBERRY HILL, THE RESIDENCE OF MR. HERBERT DE STERN.



THE SMALL CHAPEL IN THE GARDEN.



THE OLD FOUNTAIN IN FRONT OF THE GARDEN
ENTRANCE.



A PRETTY VIEW OF THE GROUNDS.

STRAWBERRY HILL HOUSE

-THROUGHOUT THE YEARS-

16th MARCH 1904 - *The Tatler*

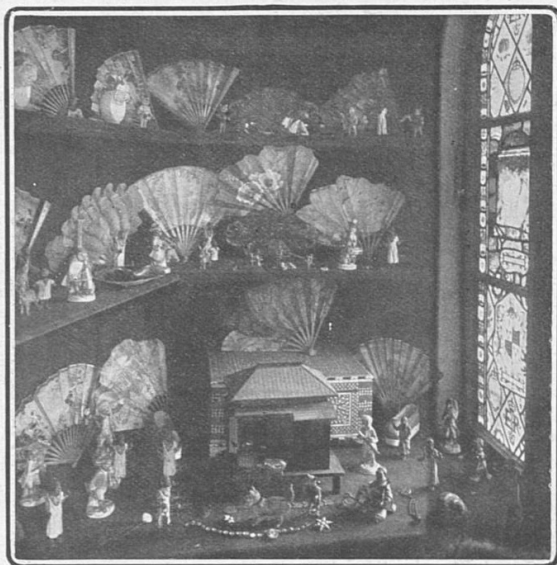


THE HOSTESS OF STRAWBERRY HILL, BARONESS DE STERN

Is the wife of Baron de Stern, the owner of Strawberry Hill at Twickenham, once the residence of Horace Walpole. She is the possessor of some exceedingly fine pearls, and the necklace which she is wearing in the photograph is said to be worth £30,000

445

29th NOVEMBER 1905 - *The Sketch*
'HOUSEHOLD GODS'



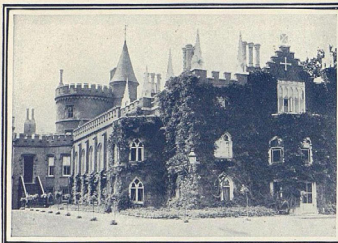
A COLLECTION OF FANS AND CURIOS IN A RECESS IN THE WALL OF "LADY WALDEGRAVE'S BEDROOM," AND STAINED GLASS BEARING A PORTRAIT OF QUEEN ELIZABETH AND HER CYPHER.

24th JUNE 1908 - *The Tatler*

THE TATLER

[No. 365. JUNE 24, 1908]

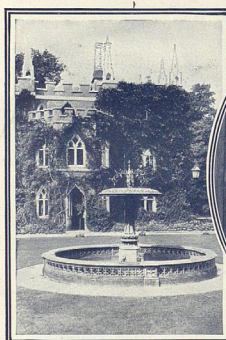
A HISTORIC HOME—LORD MICHELHAM



THE OLDEST PART OF STRAWBERRY HILL



A GLIMPSE OF HORACE WALPOLE'S LIBRARY



THE OLD FOUNTAIN AT STRAWBERRY HILL



LORD AND LADY MICHELHAM



A SUMMERHOUSE IN THE GROUNDS

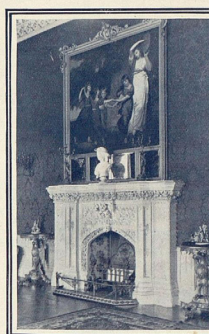


A SCENE AT A RECENT GARDEN PARTY IN THE GROUNDS OF STRAWBERRY HILL

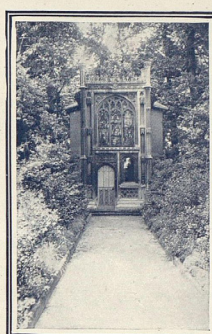
Though there are tens of thousands who pass by the grounds of Lord Michelham's historic house during the year there are but few who know of the beauties within the boundaries of the grounds surrounding it. The house, originally built by Horace Walpole, was added to by Frances Countess Waldegrave, and the building is now like two houses of totally different styles of architecture joined together. The old building is very picturesque with quaint little windows painted white in which is valuable painted glass. The rooms are very low and small with the exception of Walpole's library on the first floor. The gallery, also on this floor, is a marvel of decoration but is merely used as a passage to the newer building. Through this is the boudoir, a circular room with an oval window filled with stained glass. From here is a lobby leading to the ballroom, which is in the new building and built at right angles to the original. This enormous room was used by Lady Waldegrave



THE GALLERY AT STRAWBERRY HILL



GAINSBOROUGH'S "THE LADIES WALDEGRAVE"



THE CHAPEL IN THE GROUNDS



A SCENE IN THE BALLROOM



A SMALL GARDEN ROOM IN THE GROUNDS

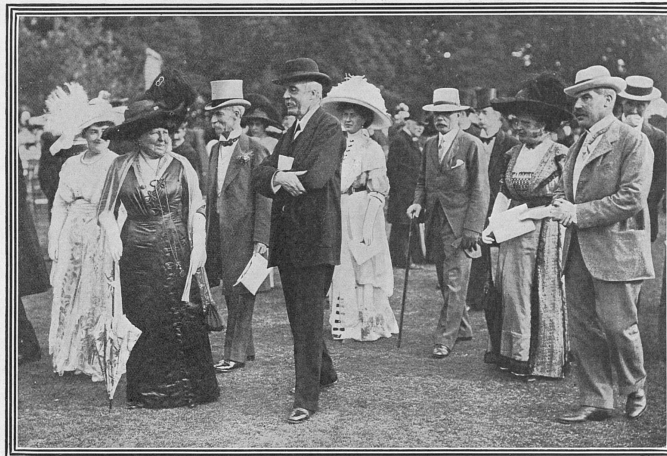
-THROUGHOUT THE YEARS-

Herbert Stern, 1st Baron Michelham & Aimee Geraldine, Lady Michelham
at the 1911 Coronation of George V and his wife, Mary. © National Portrait Gallery, London.



24TH JULY 1912 - *The Tatler*

POLITICAL GARDEN PARTY AT STRAWBERRY HILL A Cool Refuge in the Height of the Heat Wave.



LADY MICHELHAM AND SOME OF HER GUESTS AT STRAWBERRY HILL *Newspaper*
On extreme left is seen Lady Michelham, while in the foreground, from left to right, are: Mariel Viscountess Helmsley, Lord Lansdowne (in grey top hat), Mr. Balfour, Mrs. Jessel (in white), Mr. Walter Long, and Captain Jessel



MADAME PAVLOVA *Underwood*

With M. Novikoff dancing before the guests



MR. BONAR LAW AND CAPTAIN JESSEL *Graphic*

Walking in the grounds

Lord and Lady Michelham gave a delightful garden party last week at Strawberry Hill to meet Lord Lansdowne and the vice-presidents of the London Municipal Society. A large number of guests were present, while the incomparable Pavlova with her troupe of dancers made their appearance during the afternoon on a stage erected in the grounds

31ST JULY 1912 - *The Tatler*



LADY MICHELHAM'S DANCING PARTY AT STRAWBERRY HILL, TWICKENHAM *Newspaper*

Prince Christopher and Prince George of Greece, Dom Luis Fernando of Bourbon, and Prince Karl Georgeovics were the guests of honour at the dance given by Lord and Lady Michelham at Strawberry Hill the other day. There was a large dinner before the ball followed by a variety entertainment in a marquee in the garden. Amongst those in the group may be seen: The Infante Luis Fernando of Spain, Lord and Lady Michelham, the Hon. J. Stern, Madame Vesnitch, Miss Vesnitch, Mr. Blumenthal, M., Madame, and Mlle. Cervex, Prince Charles de la Tour d'Auvergne, Count B. de Durfort, Count Odet de Jumillac, Viscount de Montreuil, Mrs. Law, Mr. de Soto, Mr. and Mrs. Jefferson Cohn, Señor de Almagro of the Spanish embassy, and Mr. Livingston Phelps

-THROUGHOUT THE YEARS-

15th JULY 1914 - *The Sketch*

CONTRASTS AT A GARDEN-PARTY AT STRAWBERRY HILL.



1. "SOME" HOSTS: LORD AND LADY MICHELHAM, WHO GAVE THE PARTY.
2. SOME GUESTS: MISS JESSE, MURIEL, LADY HELMLEY, LADY GWENDOLEN LITTLE.
3. SOME FUN: HARRY TATE'S BOY ASSISTANT LOOKS AFTER HIMSELF.
4. SOME TROUBLE: ETZEL LEVY IN DIFFICULTY WITH MALCOLM SCOTT'S CORNET.

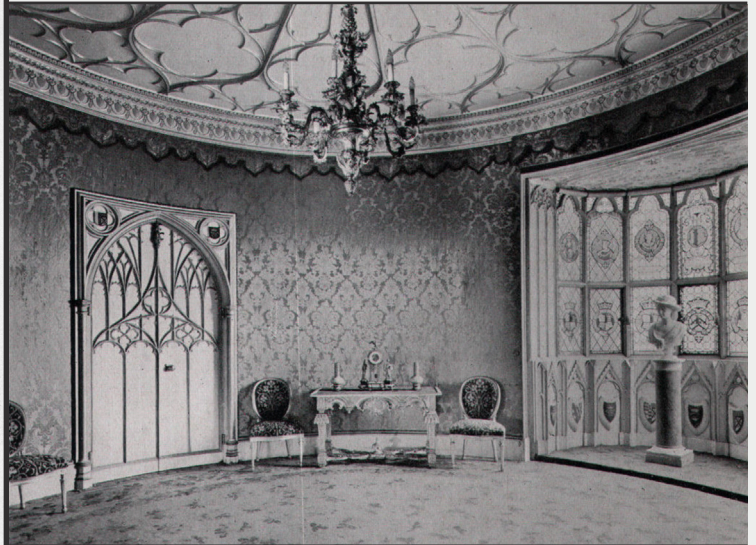
The garden party given by Lord and Lady Michelham to meet the Marquis of Lansdowne and the Vice-President of the London Municipal Society was a bright and enjoyable function, as entertainments of various kinds were provided by well-known "musicians" to amuse the company. Lord Michelham, who is the first Baron, created in 1905, was an Alderman of the L.C.C. from 1906-1912, and is a son of the late Baroness de Buns, of Portugal. Lady Michelham is the daughter of Mr. Octavius Baskinshaw, barrister-at-law, who was at one time a Major in the Royal Devon Regiment. He was High Sheriff of Devon in 1862.

Photographs by Alfieri, Topham, and Central Press.

HERBERT STERN, 1ST BARON MICHELHAM by Boissonnas & Taponier (1917) © National Portrait Gallery, London



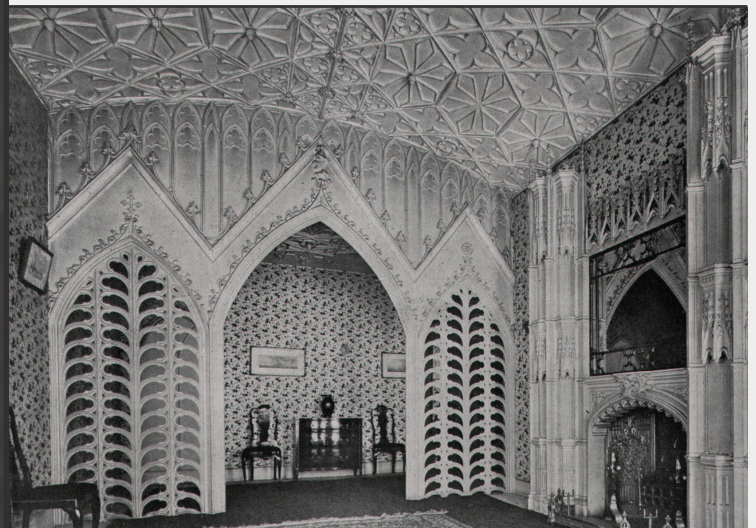
12th JULY 1924 - *Country Life*



THE ROUND ROOM



THE GALLERY



THE HOLBEIN CHAMBER